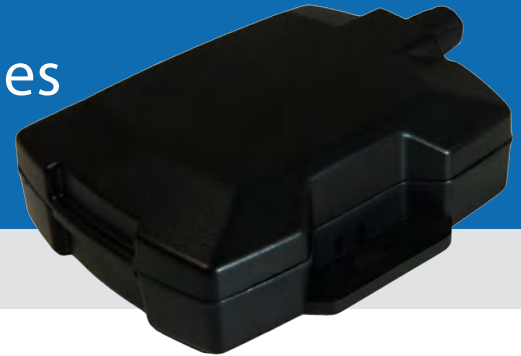




LMU-1100™ GPRS/CDMA/HSPA Series

Water Resistant GPS Tracking Unit



EXPERIENCE THE ADVANTAGE

- GSM/GPRS, CDMA 1xRTT or HSPA configuration
- Water resistant
- Built-in 1000mAh back-up battery
- Built-in 3-axis motion sense and tilt alerting
- Built-in cellular and GPS antenna for easy installation
- Input/output configuration to support up to 2 inputs, 1 output, 1-wire® interface for temperature sensors
- Superior GPS & cellular performance
- Low power sleep modes
- Over-the-air update capability for configuration and firmware
- IP66 sealed enclosure

The LMU-1100 is an economical, fully-sealed vehicle tracking product designed for easy and reliable installation in recreational vehicles and assets with outdoor exposure. The LMU-1100 is an ideal solution for asset monitoring and theft recovery for motorcycles, snowmobiles and other outdoor recreational vehicles.

COMPETITIVE PRICE, COMPETITIVE TECHNOLOGY, COMPETITIVE EDGE

The LMU-1100 high-value tracking device from CalAmp features a small size, superior GPS performance, an internal 1000 mAh back-up battery and 2 inputs/ 1 output (I/O). The LMU-1100 is a complete vehicle tracking and communications device incorporating next-generation, super-sensitive GPS technology on cellular networks for installation in any 12 or 24 volt mobile vehicle. Superior internal antennas for both cellular and GPS eliminate the need for wired antennas and make the LMU-1100 mountable virtually anywhere on or in the vehicle for easy, inexpensive installations. Messages are transported across the cellular network using enhanced SMS or UDP messaging providing a reliable communications link between the device and your application servers. The LMU-1100 is designed to dramatically reduce cost of ownership, power and size while providing excellent field reliability.

FLEXIBILITY

The LMU-1100 employs CalAmp's advanced industry leading on-board alert engine, PEG™ (Programmable Event Generator) to monitor external conditions and support customer-defined exception-based rules to meet your application requirements. PEG monitors the vehicle environment and responds instantaneously to pre-defined threshold conditions related to time, date, motion, location, geo-zone, input and other event combinations. This behavior can be programmed by CalAmp before shipment, at a customer's facility, or over-the-air once the unit has been fielded.

OVER-THE-AIR SERVICEABILITY

The LMU-1100 leverages CalAmp's management and maintenance system, PULS™ (Programming, Updates, and Logistics System), for over-the-air configuration parameters, PEG rules, and firmware. This out-of-the-box hands free configuration and automatic post-installation upgrades can monitor unit health status across your customers' fleets to identify issues before they become expensive problems.

LMU-1100 SPECIFICATIONS

GENERAL

Communication Modes	UDP packet data and SMS 50 channel GPS
Location Technology	12 and 24 volt vehicle systems
Operating Voltage	

GPS

Location Technology	50 channel GPS (with SBAS) SBAS: WAAS, EGNOS, MSAS, GAGAN
Location Accuracy	2.0 meter CEP (with SBAS)
Tracking Sensitivity	-162dBm
Acquisition Sensitivity	-147dBm
AGPS Capable	

CELLULAR

Data Support	SMS, UDP Packet data	
Operating Bands (MHz Band)	850/900/1800/1900	
GSM/GPRS	850/1900	
CDMA/1XRTT	800(VI)/850(V)/900(VIII)/1700(IV)/1900(II)/2100(I)	
HSPA/UMTS		
Transmitter Power		
GSM/GPRS	850/900	32.5 dBm
	1800/1900	29.3 dBm
CDMA/1XRTT	850	24 dBm
	1900	23 dBm
HSPA/UMTS	(all bands)	23 dBm
HSPA data rates	5.6 Mbps upload/7.2 Mbps download	
HSPA fallback	EDGE/GPRS/GSM quad band EDGE MCS1-MCS9 3GPP Release 6	

COMPREHENSIVE I/O

Inputs	2
Outputs	1 relay driver (150mA)
1-Wire® Interface	1
Status LEDs	GPS and cellular

ENVIRONMENTAL

Temperature	-30° to +75° C (operating) -40° to +85° C (storage)
Humidity	95%RH @ 50° C non-condensing
Shock and Vibration	U.S. Military Standards 202G and 810F, SAE J1455
EMC/EMI	SAE J1113; FCC-Part 15B; Industry Canada
RoHS Compliant	

About CalAmp

CalAmp Corp. (NASDAQ: CAMP) is a proven leader in providing wireless communications solutions to a broad array of vertical market applications and customers. CalAmp's extensive portfolio of intelligent communications devices, robust and scalable cloud service platform, and targeted software applications streamline otherwise complex machine-to-machine (M2M) deployments. These solutions enable customers to optimize their operations by collecting, monitoring and efficiently reporting business critical data and desired intelligence from high-value remote assets. For more information, please visit www.calamp.com.

ELECTRICAL

Operating Voltage	6-32 VDC
Power Consumption	<2 mA @ 12V (deep sleep) <10 mA @ 12V (sleep on network with SMS) <20 mA @ 12V (sleep on network with GPRS) <70 mA @ 12V (active standby)

PHYSICAL

Dimensions	2.913 x 3.268 x 0.787", (74 x 83 x 20mm)
Weight	2.89 oz, (82g) (internal)

CONNECTORS, SIM ACCESS

SIM Access	Internal
Connection Type	Molded power and I/O harness

CERTIFICATIONS

Fully certified FCC, CE, IC, PTCRB, Applicable Carriers

MOUNTING

Standard tie-wrap or screw mount

KEY FEATURES

- UDP and SMS messaging
- Water resistant
- Internal cellular and GPS antennas
- Super sensitive GPS (-162 dBm)
- Internal 1000mAh back-up battery
- Ultra-low power sleep mode (<2mA)
- 3-axis accelerometer for motion sense and tilt
- Voltage monitoring and low battery notification
- 2,000 buffered messages
- 10 Built-in geo-fences
- PEG™ Exception-Based Rules
- Automatic, Over-The-Air Unit Configuration on Power-up (PULS™)
- Over-The-Air Firmware Download (PULS™)
- Web-Based Device Management (PULS™)

OPTIONAL FEATURES/FUNCTIONS

- Temperature sensing via 1-wire protocol
- Serial cable

DEVELOPMENT SUPPORT OPTIONS

Customized hardware and software development available on request

CalAmp Corp.

1401 N. Rice Avenue, Oxnard, CA 93030
T: 760.438.9010 | F: 760.438.5835
www.calamp.com

© 2013 CalAmp. PN: 000-0006-110 Rev 3

All specifications are typical and subject to change without notice

