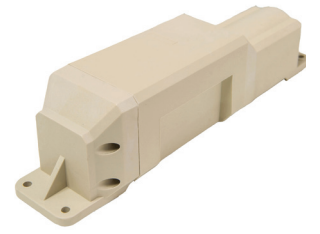
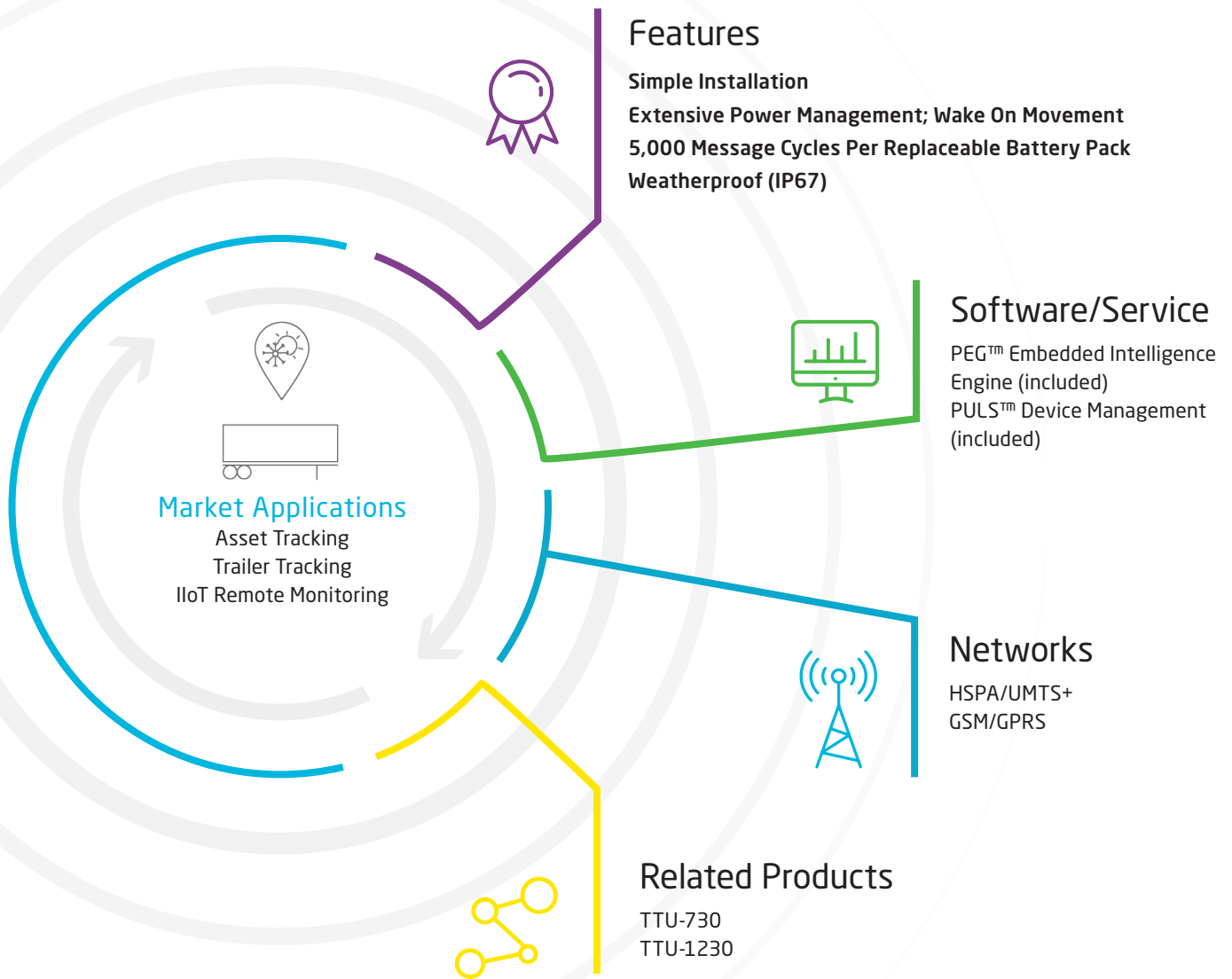


# TTU-720™



## Battery Operated Asset Tracker Made for Rapid Deployment and Extended Use Across Many Industries

The TTU-720™ is designed to support multi-year deployments using the PEG intelligence engine which enables extended life performance to reliably deliver asset status. Best suited for unpowered assets in extreme and rugged environments, this asset tracker features a durable weatherproof casing and internal antennas for simple installation.



# TTU-720™ Technical Specifications

## Cellular/Network

<b>Global Variant I</b>	
HSPA/UMTS	900 (VIII)/800 (VI)/850 (V)/1700 (IV)/1900 (II)/2100 (I) MHz
GSM/GPRS	850/900/1800/1900 MHz
<b>Global Variant II</b>	
GSM/GPRS	850/900/1800/1900 MHz

## Data Support

SMS, UDP Packet Data

## Satellite Location (GNSS)

<b>Constellation Support</b>	GPS, GLONASS, SBAS Engine (WAAS, EGNOS, MSAS, GAGAN)
<b>Channels</b>	55 Channel
<b>Tracking Sensitivity</b>	-167 dBm
<b>Acquisition Sensitivity</b>	-157 dBm (hot start) -148 dBm (cold start)
<b>Location Accuracy</b>	~2.0m CEP Open Sky (SBAS 24 hours static)
<b>Location Update Rate</b>	1 Hz
<b>AGPS Location assistance capable</b>	

## Certifications

Industry Certifications FCC, CE, IC, PTCRB, RoHS

## Device Management

**PULS™** Monitor, manage, upgrade firmware, configure and troubleshoot devices remotely

## Embedded Intelligence Engine

<b>PEG™</b>	Behavioral scripting (8-bit support)
<b>Accelerometer</b>	Built-in, triple-axis (motion sensing, tilt detection)
<b>Geo-fences</b>	10 built-in
<b>Buffered Messages</b>	2000

## Electrical

<b>Operating Voltage</b>	3.6V internal battery
<b>Power Consumption</b>	Typical 30uA @ 3.6V (hibernate) Typical 50uA @ 3.6V (deep sleep) Typical 50mA @3.6V (active GPS tracking only) Typical 80mA @3.6V (cellular idle only)

## Battery Pack

<b>Battery Capacity</b>	Up to 57 Ah
<b>Battery Voltage</b>	3.6V
<b>Battery Technology</b>	Lithium-Primary (non-rechargeable)

## Environmental

<b>Temperature</b>	30° to +65° C (operating and storage)
<b>Humidity</b>	95% RH @ 50° C non-condensing
<b>Shock and Vibration</b>	U.S. Military Standards 202G, 810F, SAE J1455
<b>ESD</b>	IEC 61000-4-2 (4KV test)
<b>Ingress Protection Rating</b>	IP67

## Physical/Design

<b>Dimensions</b>	9.90 x 2.35 x 2.45" (251 x 60 x 62 mm)
<b>Weight</b>	23.2 oz. (658g)

## Connectors/SIM Access

<b>GPS Antenna</b>	Internal
<b>Cellular Antenna</b>	Internal
<b>SIM Access</b>	Internal (2FF SIM)

## Product Options

CalAmp Telematics Cloud API

### CALIFORNIA PROPOSITION 65



#### WARNING:

This product can expose you to chemicals including Carbon black and Nickel, which are known to the State of California to cause cancer, and including Bisphenol A and 1,3-Butadiene, which are known to the State of California to cause birth defects or other reproductive harm. For more information go to [www.P65Warnings.ca.gov](http://www.P65Warnings.ca.gov)