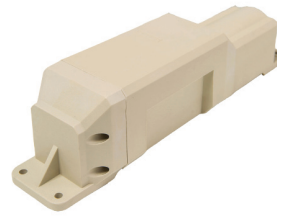
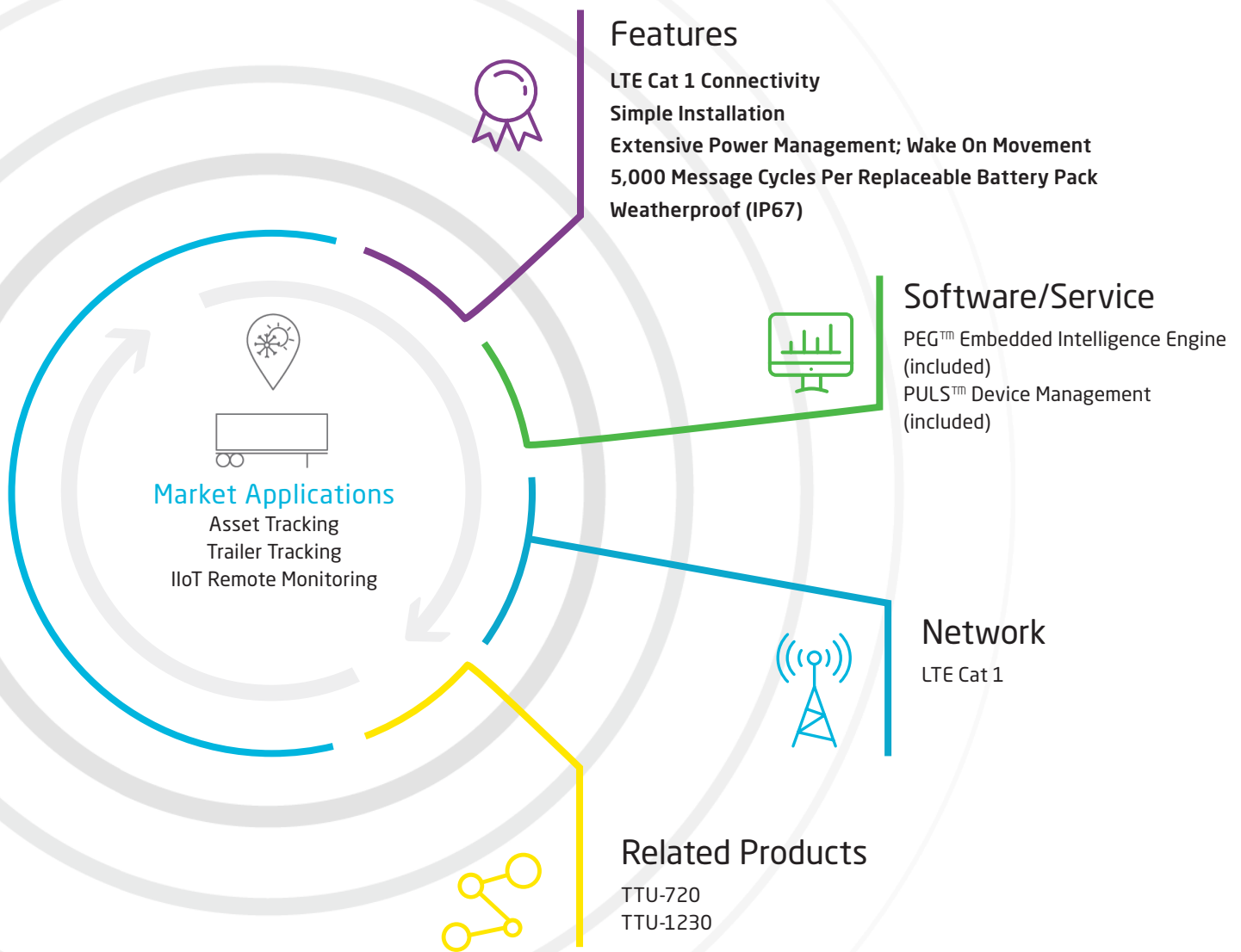


TTU-730™



An LTE Enabled, Battery Operated Asset Tracker Made for Rapid Deployment, Extended Use and Reliable In-Field Installation

The TTU-730™ enhanced with LTE Cat 1, is a battery operated asset tracking device designed for multi-year deployments. PEG™ intelligent capabilities, enable proven performance for extended life. Weatherproof design incorporating internal antennas simplifies installation making it best suited for unpowered assets in extreme and rugged environments.



TTU-730™ Technical Specifications

Cellular/Network

North American Variant I

LTE Cat 1	1900 (B2)/AWS 1700 (B4)/850 (B5)/700 (B17) MHz
HSPA/UMTS	850 (V)/1900 (II) MHz

North American Variant II

LTE Cat 1	AWS 1700 (B4)/700 (B13) MHz
-----------	-----------------------------

Data Support

SMS, UDP Packet Data

Satellite Location (GNSS)

Constellation Support GPS, GLONASS, SBAS Engine (WAAS, EGNOS, MSAS, GAGAN)

Channels 55 Channel

Tracking Sensitivity -167 dBm

Acquisition Sensitivity -157 dBm (hot start)
-148 dBm (cold start)

Location Accuracy ~2.0m CEP Open Sky (SBAS 24 hours static)

Location Update Rate 1 Hz

AGPS Location assistance capable

Certifications

Industry Certifications FCC, IC, PTCRB, RoHS

Device Management

PULS™ Monitor, manage, upgrade firmware, configure and troubleshoot devices remotely

Embedded Intelligence Engine

PEG™ Behavioral scripting (8-bit support)

Accelerometer Built-in, triple-axis (motion sensing, tilt detection)

Geo-fences 10 built-in

Buffered Messages 2000

Electrical

Operating Voltage 3.6V internal battery

Power Consumption Typical 30uA @ 3.6V (hibernate)
Typical 50uA @ 3.6V (deep sleep)
Typical 50mA @ 3.6V (active GPS tracking only)
Typical 80mA @ 3.6V (cellular idle only)

Battery Pack

Battery Capacity Up to 57 Ah

Battery Voltage 3.6V

Battery Technology Lithium Primary

Environmental

Temperature -30° to +65° C (operating and storage)

Humidity 95% RH @ 50° C non-condensing

Shock and Vibration U.S. Military Standards 202G, 810F, SAE J1455

ESD IEC 61000-4-2 (4KV test)

Ingress Protection Rating IP67

Physical/Design

Dimensions 9.90 x 2.35 x 2.45" (251 x 60 x 62 mm)

Weight 23.2 oz. (658 g)

Connectors/SIM Access

GPS Antenna Internal

Cellular Antenna Internal

SIM Access Internal (2FF SIM)

Product Options

CalAmp Telematics Cloud API

CALIFORNIA PROPOSITION 65



WARNING:

This product can expose you to chemicals including Carbon black and Nickel, which are known to the State of California to cause cancer, and including Bisphenol A and 1,3-Butadiene, which are known to the State of California to cause birth defects or other reproductive harm. For more information go to www.P65Warnings.ca.gov